

ROCK SAW

Built for tough



Applications

- Quarry.
- Landscaping.
- Construction material preparation.
- Road construction and repair.
- Tunneling.
- Building demolition.
- Recycling.
- Trenching

Cutting Granite, Reinforced Concrete, Asphalt, Marble, and Limestone. A Blade with diamond segments is good for quarrying, landscaping, load repairing, tunneling, and demolition. It makes a fine cut with a smooth surface.



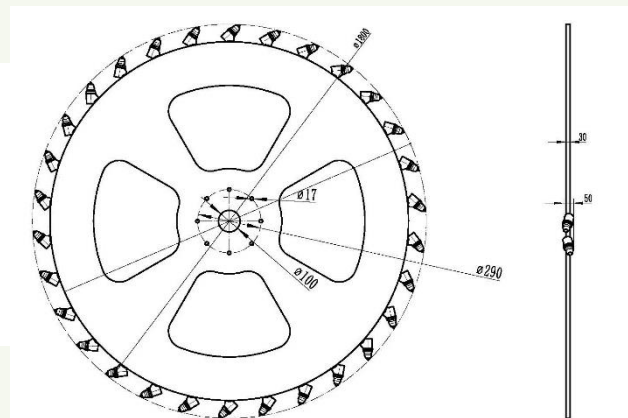
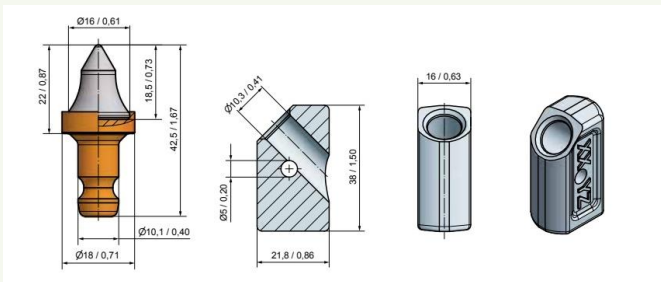
ROCK SAW

Built for tough

Cutting non-ferrous metals such as Aluminum, Copper, Gold and silver. A Blade with Tungsten-Carbide tips can make a fine cut for soft metals.

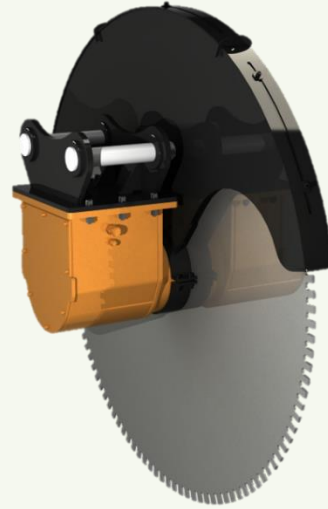
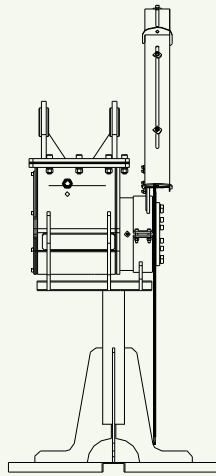
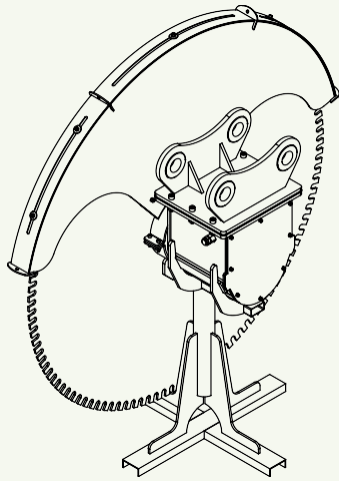


Cutting Lime stone, Sand stone—This blade with Tungsten-Carbide picks is for trenching, fast and primary cutting of soft rocks. Sandstone



ROCK SAW

Built for tough



Specification of Standard driving unit

TechnicalData	UNIT	RS-02S	RS-05S	RS-10S	RS-15S	RS-20S	RS-25S	RS-20D	RS-30D
Max. output power*	kw	40	70	100	190	230	280	90 x 2	120 x 2
Max flow	l/min	75	160	175	350	420	550	280	300
Recommended flow	l/min	30-60	60-100	100-150	150-290	200-375	300-420	180-250	180-300
Max. pressure	bar	315	315	315	315	315	315	450	450
Output Torque @ 320 bar	Nm	580	960	1580	3100	3900	6630	7463	7763
Shaft speed	rpm	0-600	0-600	0-500	0-500	0-450	0-325	0-250	0-250
Weight without blade	kg	140	250	350	450	750	950	1300	1350
Saw disk diameter(diamond)	mm	800-1000	800-1200	1200-1600	1400-1800	1600-2600	2800-3200	1800-3200	1800-3200
Cutting depth loss **	mm	210	250	300	340	375	380	370	370
Distance between two saws	m							1	1
	m							1.2	1.2
	m							1.4	1.4
Excavator	ton	1-4	5~10	8~16	15~25	20~45	25~60	20~36	20~45
Remarks									

Above specification can be changed without a previous notice for improvement in quality

* Maximum power could be changed due to performance upgrade

** Cutting depth = (saw disk diameter - cutting depth loss)/2

Key features

1. Fast-acting automatic brake system.
2. Reversible blade Rotation
3. Built-in Overpressure, Over-run protection.
4. Double swiveling shield.
5. Adjustable protective blade shield.
6. Stand for safekeeping and changing of blade
7. Top-class steel blade with high elasticity.
8. One year warranty for main body.

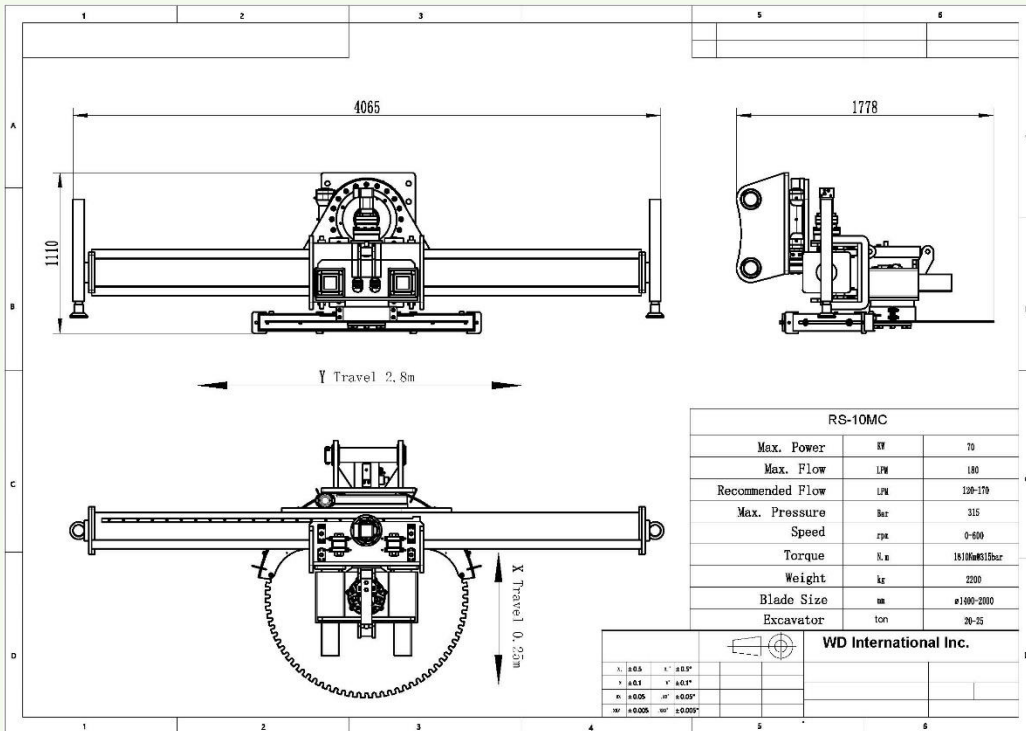


ROCK SAW

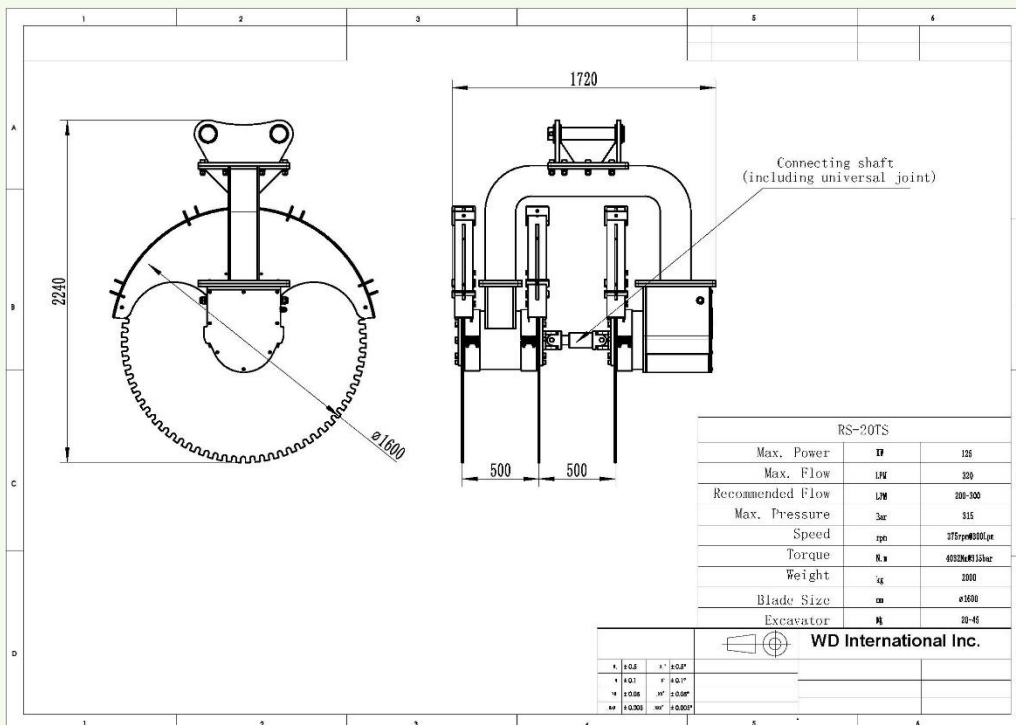
Built for tough

Advanced solutions for specific applications

Please consult with us for your applications. Our experienced engineering team can provide the top level of technical advice and the best solutions.



A rock saw with two axis of moving tracks (X , Y).



A rock saw with triple blades.