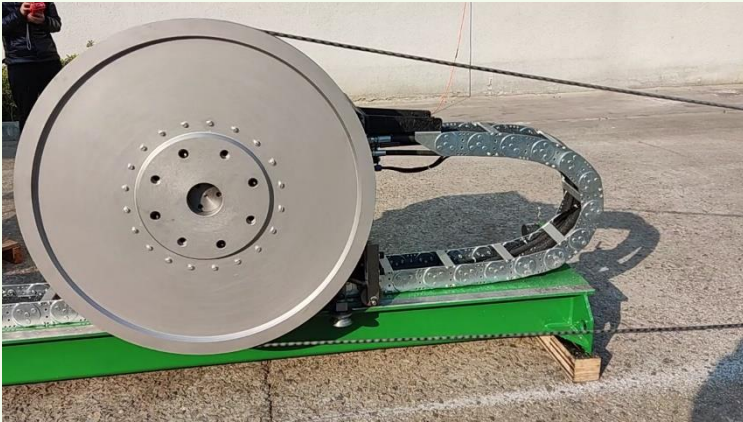


CHAIN(WIRE) SAW

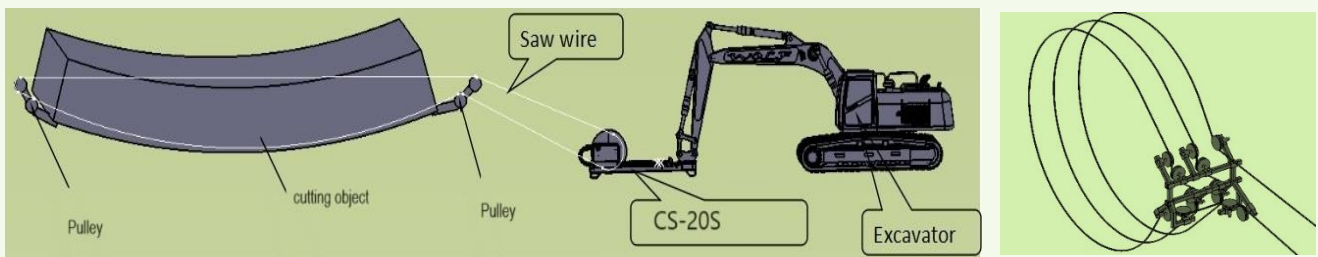
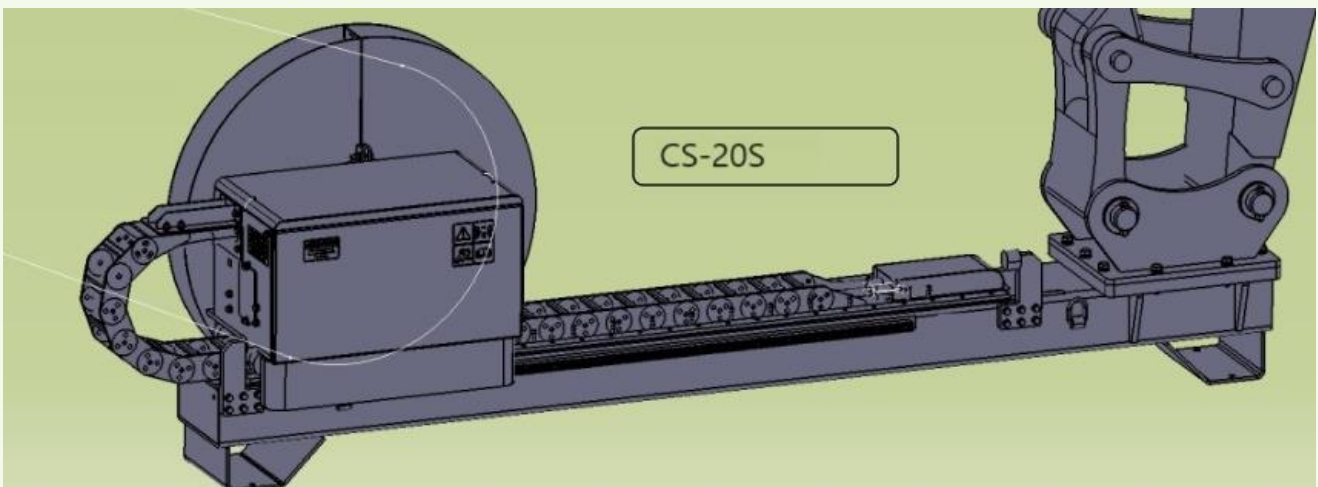


Attachment

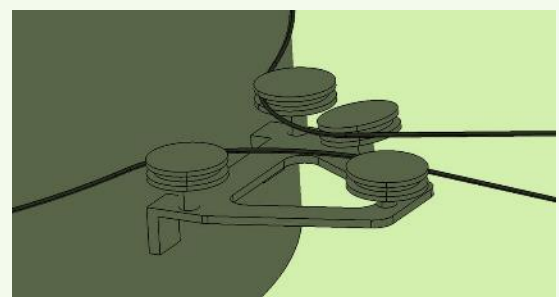
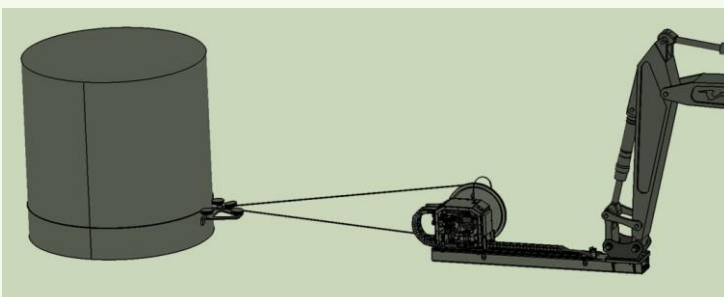
Applications

- Building, Bridge demolition.
- Furnace, structural demolition.
- Factory demolition
- Quarry.
- Recycling.
- Landscaping.

Cutting Steel pipe, Steel beam, Reinforced concrete, Granite, Marble, Aluminum, Copper ingot, brick wall...



A dedicated pulley system makes possible several cuts at the same time.



A simple pulley system makes horizontal cutting easy.
The location of the chain saw can be changed easily by the excavator.

CHAIN SAW **Built for tough**



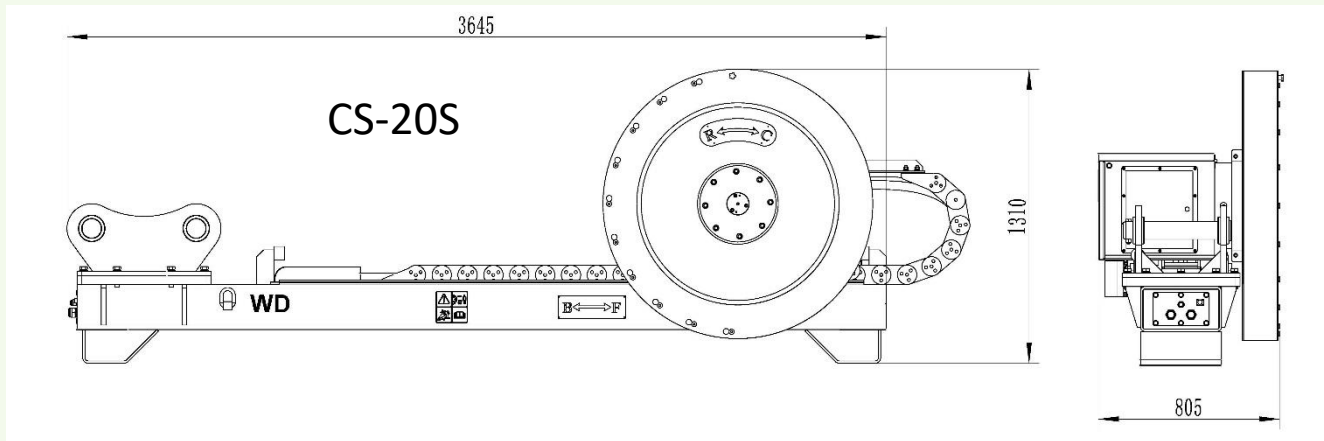
- The diamond chain saw (wire saw) can cut any type of material with the massive hydraulic power from the excavator.
- Huge buildings or industrial structures can be cut without the limit of size.
- No additional power pack is needed. The demolition excavator can do all the work.



- Precise control of wire tension with a remote controller(wireless) and sensors
- Automatic control of rotating and tracking speed.
- Over-tension Protection ensures the long life of the chain.

CHAIN SAW

Built for tough



	CS-10S	CS-20S
Max. Motor Power(Kw)	40	70
Max. Flow(Lpm)	150	180
Recommended Flow(Lpm)	60-100	100-150
Max. Pressure(Bar)	310	310
Wire Speed (m/s)	0-40	0-40
Chain diameter (mm)	~ 11.8	~11.8
Track speed (m/h)	0-40	0-40
Track Travel (mm)	customizable	customizable
Flywheel diameter(mm)	800	1000
Wire length(m)	20-100	20-150
Working temp.(°C)	-15~40	-15~40
Weight(Kg)	800	1200
Dimension(mm)	3000x730x1000	3650x850x1300
Excavator(Ton)	8~15	20-45