



EQC

(QUICK COUPLER WITH
QUINTUPLE SAFETY)



WD International
Walter Kim
1 514 893 3189
sales@wdintlinc.com
www.wdintlinc.com

Accidents related to hydraulic quick coupler



Hydraulic system malfunction

- Failure of cylinder or valve system, system pressure loss...

Electrical system malfunction

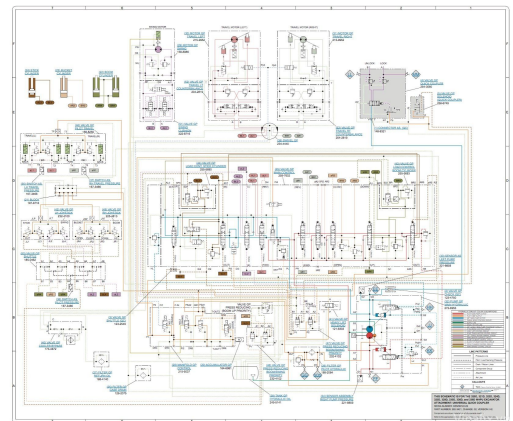
- Short circuit, open circuit, Solenoid burn out, power loss...

Unexpected breaking of coupler parts

- Breaking of link pin, breaking of coupler hitch...

Operator's mistake

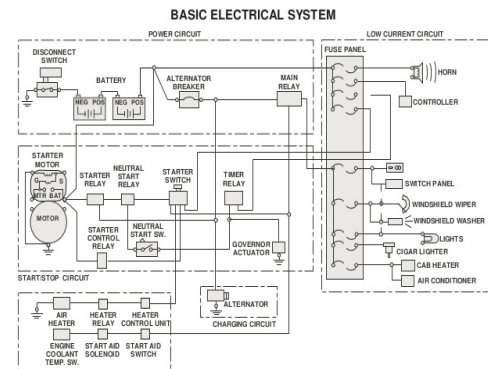
- Lack of placing manual safety pin.
- Unwanted/accidental deactivation of hitch engagement switch during operation.
- Unawareness of insecurely placed hook or wedge during bucket hooking attempt
- Lack of the activation of engagement switch during bucket hooking attempt.



Failure on hydraulic system



Operation error of engagement switch



Failure on electrical system

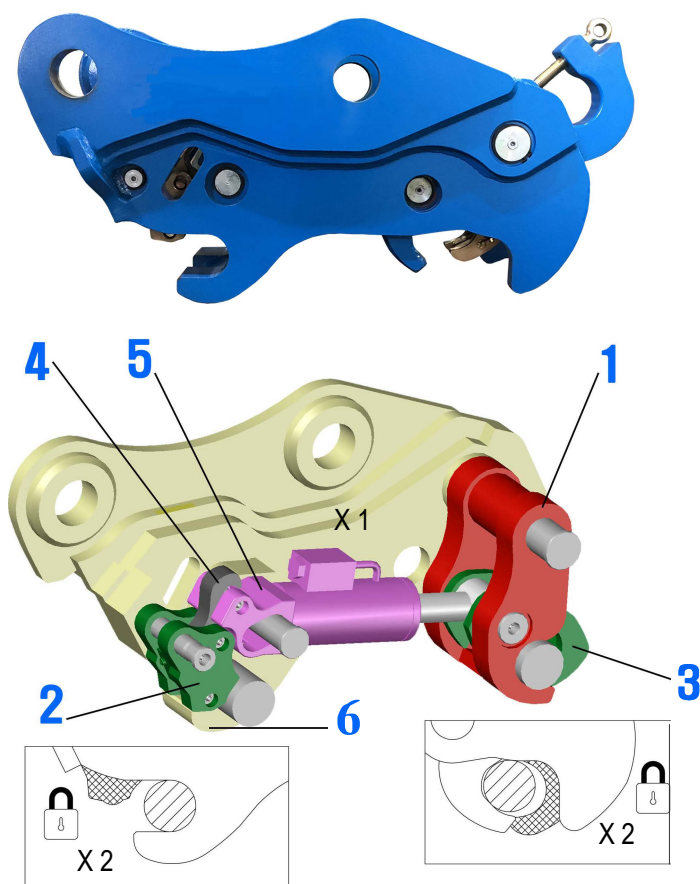
For failure videos,
Please visit
www.wdintlinc.com



lack of manual safety pin



Breaking of coupler part



1. Rear Hitch
2. Front Lock
3. Rear Lock
4. Link hook
5. Hydraulic Cylinder
6. Front Hitch

Key features of EQC hydraulic quick couplers

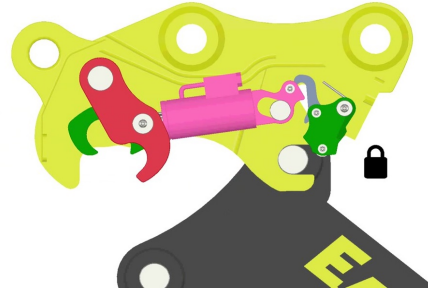
1. Front hitch is locked mechanically and automatically when a bucket pin slides into the slot.
2. Both front and rear hitches are locked when the engagement switch is activated.
3. Both hitches can be unlocked only when the quick coupler is in fully curled position.
4. When any accident happens, the coupler keeps holding both pins.
5. Both front and rear hitches can be easily disengaged manually when needed.
6. The internal space is wide enough to let the dirt flow through.
7. Equipment operator can replace internal parts in 15 min.
8. As light as any other hydraulic quick coupler.
9. Strong enough for hammers and compactors.
10. Made with AR-450/500 plate for the most part.
11. All pins and locking part are specially treated and almost rust free.
12. Accept wide range of the pin distance of bucket.

Key Benefits

- Best design when the safety matters.
- No other quick coupler provide operation safety up to this level.
- It protect peoples from almost all kinds of mechanical failure and human mistake.
- No need for manual safety pin.
- Easy operation and simple maintenance at site.

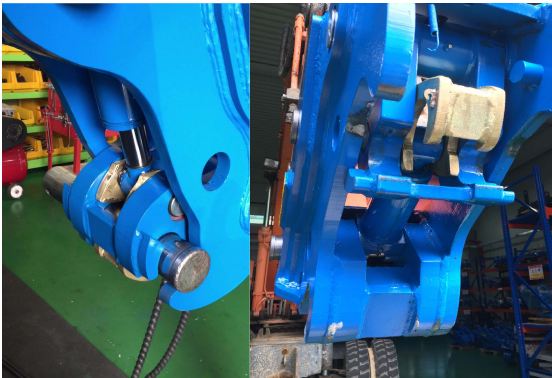
Front Lock :

- Locked **mechanically and automatically** as soon as the bucket pin slides into the slot.
- Locked again(double lock) at any position with the activation of engagement switch.
- Unlocks when the engagement switch is deactivated while the angle of coupler is more than 120 degrees(fully curled position).

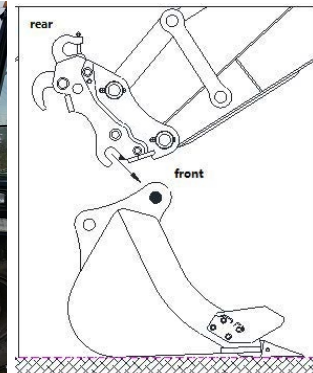
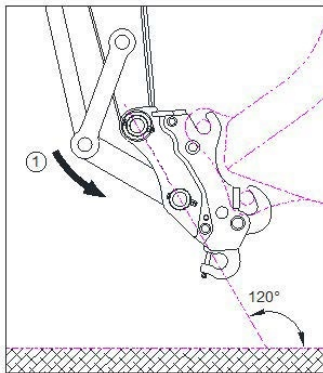


Rear Lock :

- Locked at any position when the engagement switch is on.
- Unlocks when the engagement switch is deactivated while the angle of coupler is more than 120 degrees(fully curled position).



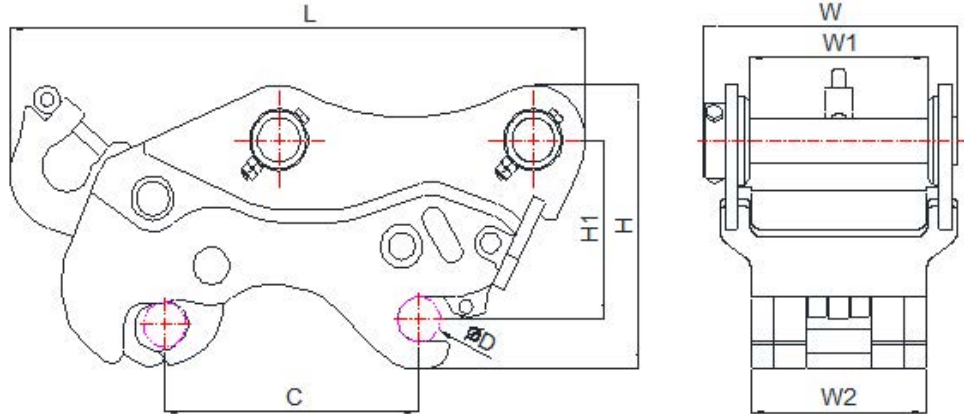
fully curled position



Internal Space : Internal space is wide enough to let the dirt flow.



Models and specification



Push type

Ctypeoupler	Unit	EQC 03	EQC 06	EQC 08	EQC 10	EQC 14
Operating Weight	kg	77~81	221~225	430~437	615~625	703~897
Length (L)	mm	618	883	1043	1137	N/A
Height (H)	mm	311	415	517	577	N/A
Height (H1)	mm	195	262	322	362	N/A
Width (W)	mm	277	400	529	630	N/A
Installation Width (W1)	mm	155 ~ 165	260 ~ 275	326 ~ 334	395 ~ 411	N/A
Installation Width (W2)	mm	153~163	258~273	324~328	392~404	N/A
Pin distance(C)	mm	250~292	375~420	445~490	485~528	N/A
Pin diameter(D)	mm	45	65	80	90	100~120
Operation pressure	bar	30~250	30~250	30~250	30~250	30~250
Oil Flow	lpm	10~20	10~20	10~20	10~20	10~20
Best Excavator size	ton	5 (5~6)	14(12~17)	21(18~24)	30(28~32)	35~50

* Quick coupler for excavators with non- standard W1, W1, C, D value are also possible . Please contact us with the information.

